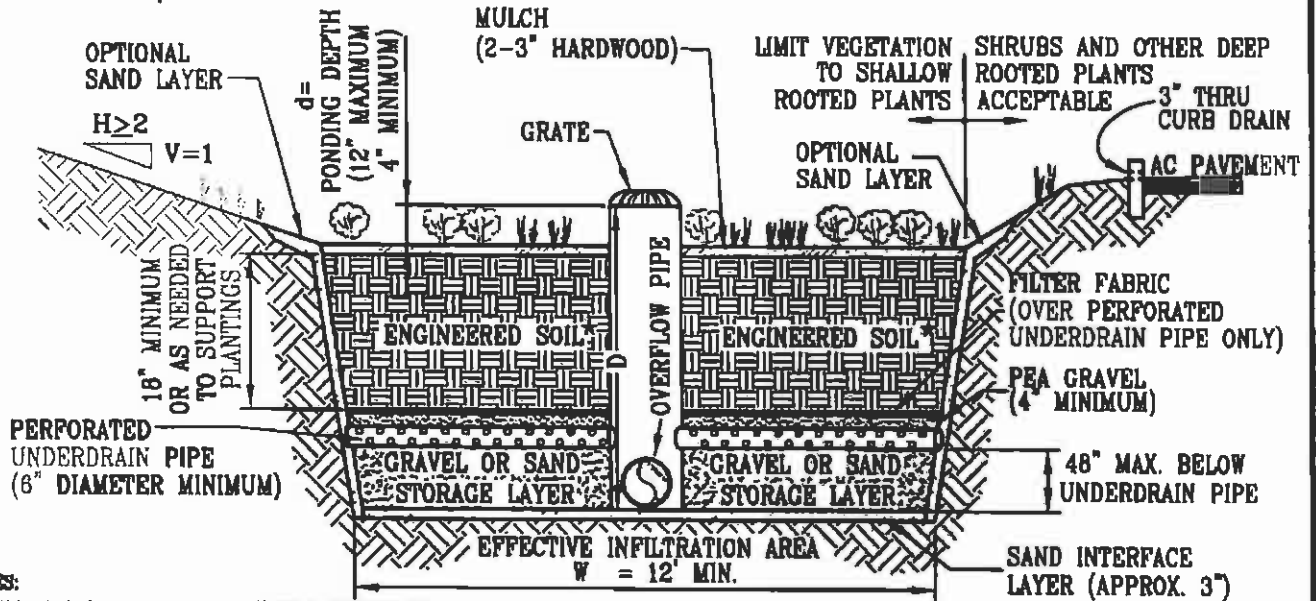
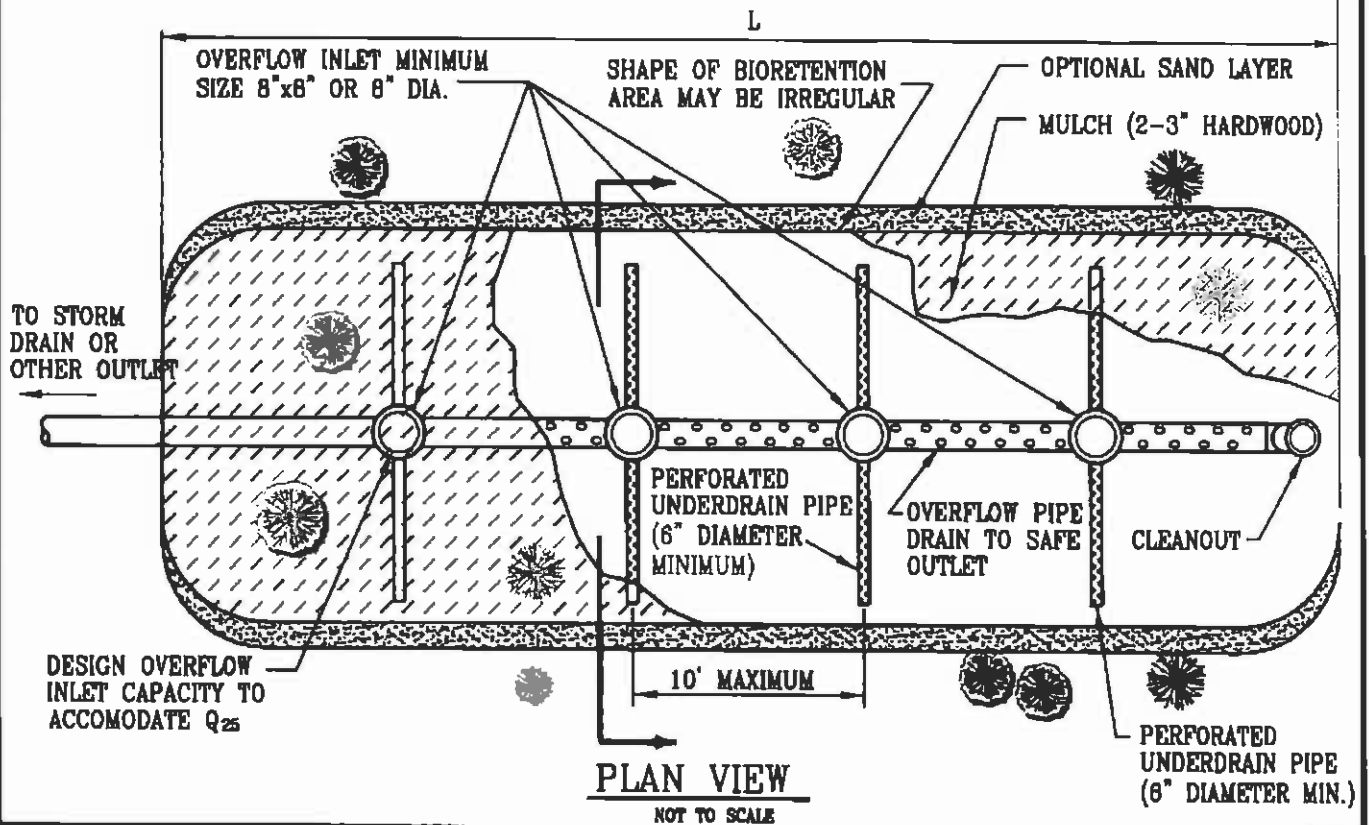


C3 – Series

(Stormwater Treatment)

Note: These details are provided for guidance only and are based upon the C.3 guidelines in effect at the present time (August 2008). It is the responsibility of the designer to insure that the construction details used are in conformance with the latest stormwater treatment requirements and regulations.

TUE, SEP 09, 2008 07:19 A BUB CJ-1 2: \CLAYTON STANDARDS\DWG\2008 UPDATES\CJ\C3 REQUIREMENTS.DWG



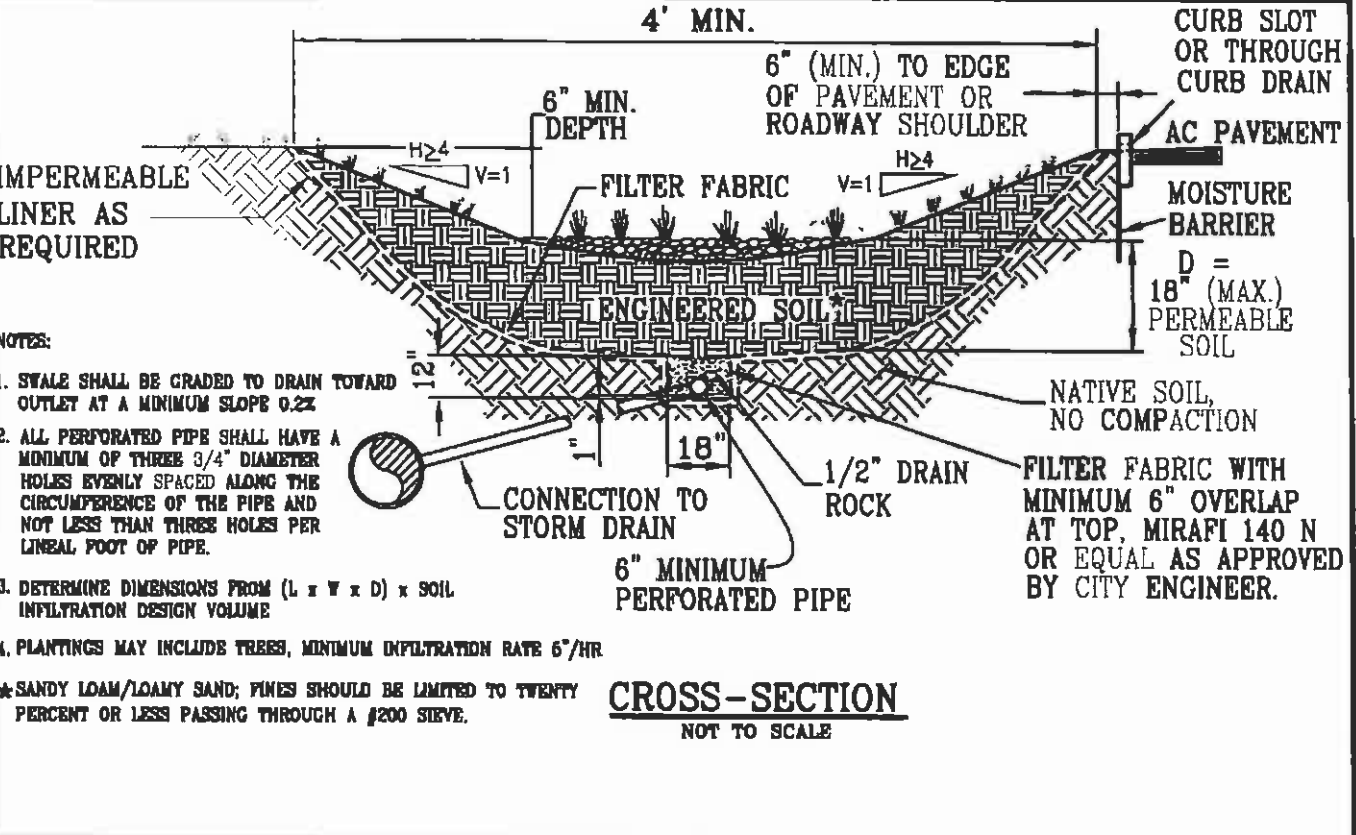
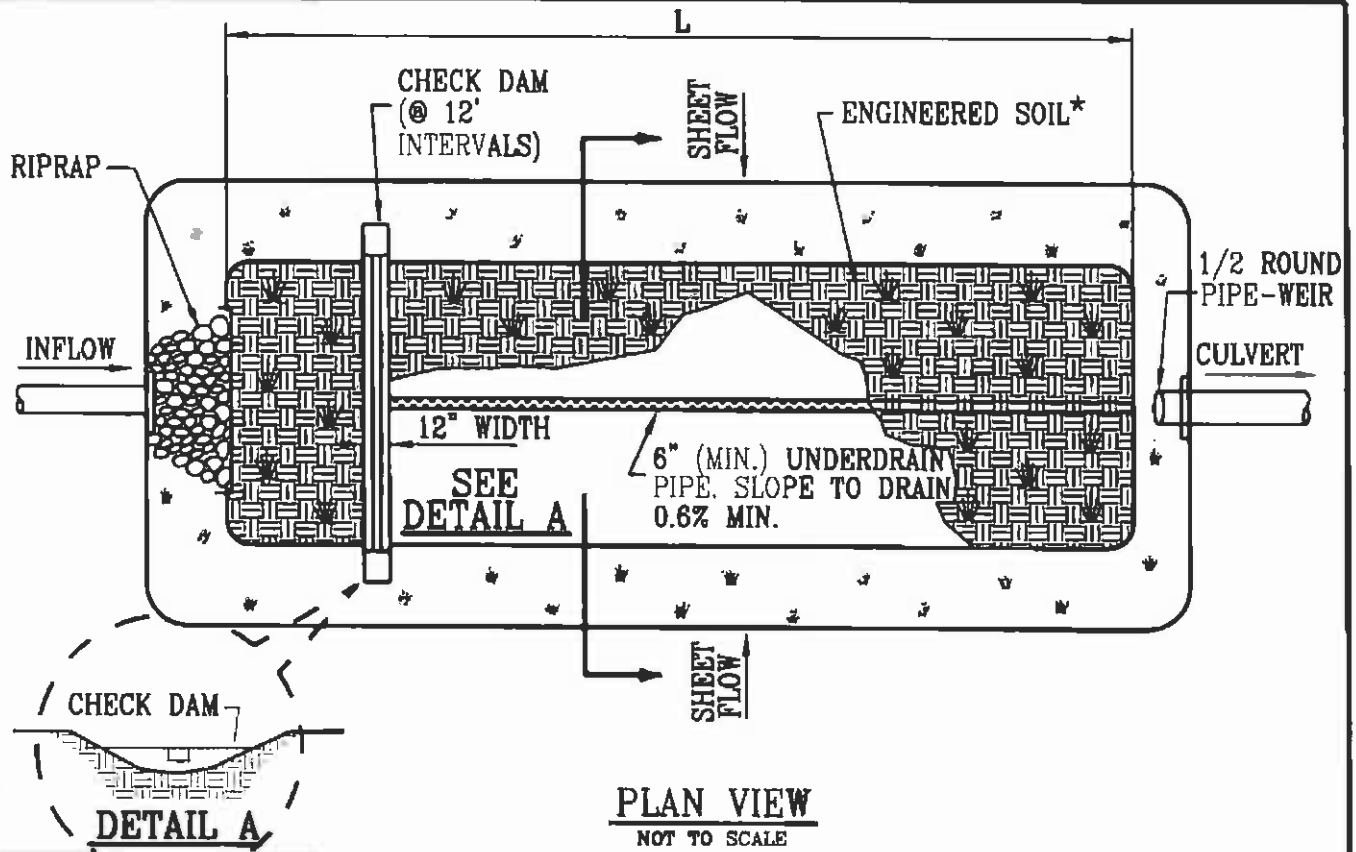
NOTES:

1. ALL PERFORATED PIPE SHALL HAVE A MINIMUM OF THREE 3/4" DIAMETER HOLES, EQUALLY SPACED ALONG THE CIRCUMFERENCE OF THE PIPE AND NOT LESS THAN THREE HOLES PER LINED FOOT OF PIPE.
 2. DETERMINE DIMENSIONS FROM $L \times W \times D =$ INFILTRATION DESIGN VOLUME.
- * SANDY LOAM/LOAMY SAND; PINES SHOULD BE LIMITED TO TWENTY PERCENT OR LESS PASSING THROUGH A #200 SIEVE.

CROSS-SECTION
NOT TO SCALE

 CITY OF CLAYTON Founded 1857 ... Incorporated 1964	BIOFILTRATION PLANTER		SHEET 1 OF 1
	DATE: AUGUST, 2008	SCALE: NONE	PAGE C3-1
APPROVED:		CITY ENGINEER	

MON, SEP 08, 2008 07:55 A BJB C3-2 Z:\CLAYTON STANDARDS\DWG\2008 UPDATES\C3\C3 REQUIREMENTS.DWG



NOTES:

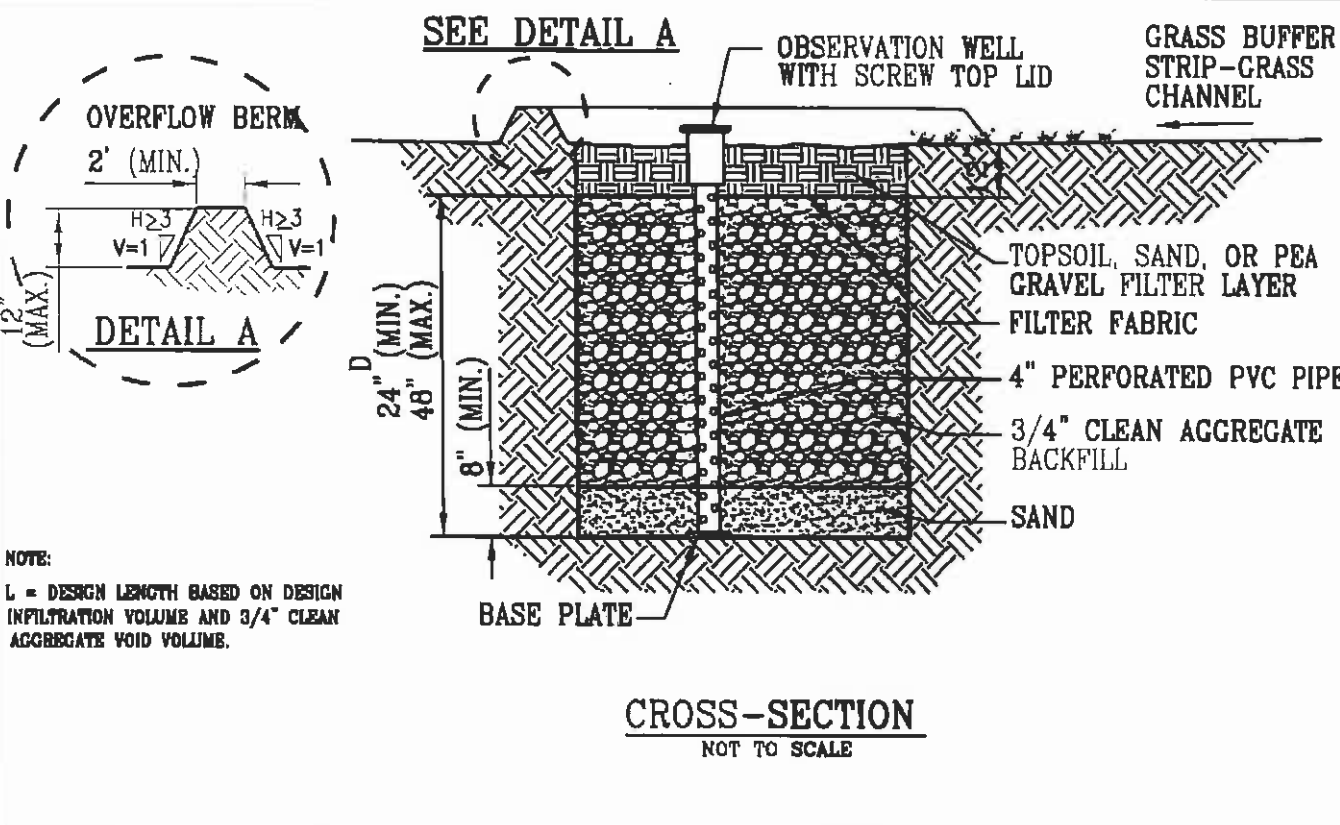
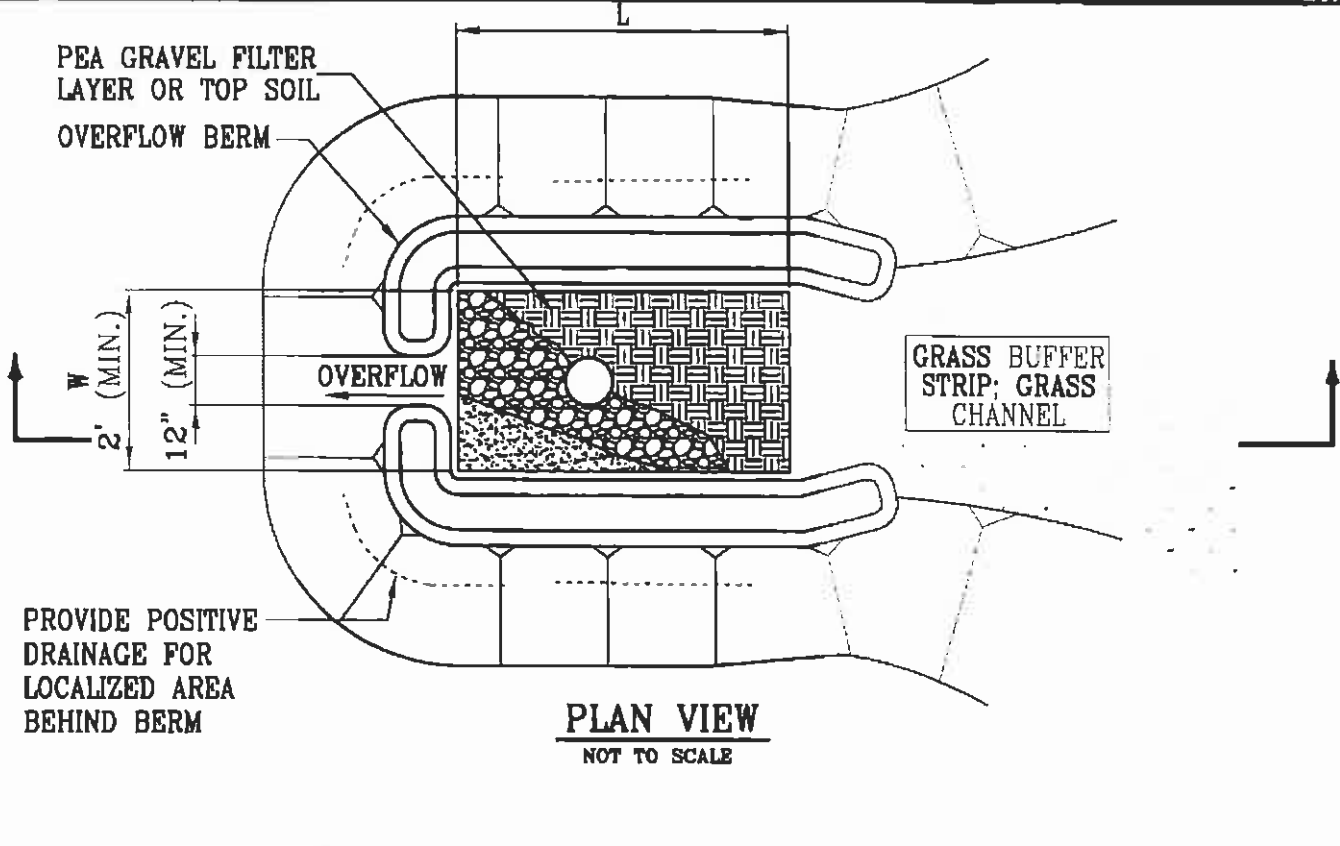
1. SWALE SHALL BE GRADED TO DRAIN TOWARD OUTLET AT A MINIMUM SLOPE 0.2%
2. ALL PERFORATED PIPE SHALL HAVE A MINIMUM OF THREE 3/4" DIAMETER HOLES EVENLY SPACED ALONG THE CIRCUMFERENCE OF THE PIPE AND NOT LESS THAN THREE HOLES PER LINEAL FOOT OF PIPE.
3. DETERMINE DIMENSIONS FROM (L x W x D) x SOIL INFILTRATION DESIGN VOLUME
4. PLANTINGS MAY INCLUDE TREES, MINIMUM INFILTRATION RATE 6"/HR

*SANDY LOAM/LOAMY SAND; PINES SHOULD BE LIMITED TO TWENTY PERCENT OR LESS PASSING THROUGH A #200 SIEVE.

CROSS-SECTION
NOT TO SCALE

<p>CITY OF CLAYTON Founded 1857 ...Incorporated 1964</p>	VEGETATED SWALE DETAIL		SHEET 1 OF 1
	DATE: AUGUST, 2008	SCALE: NONE	PAGE
	APPROVED:	CITY ENGINEER	C3-2

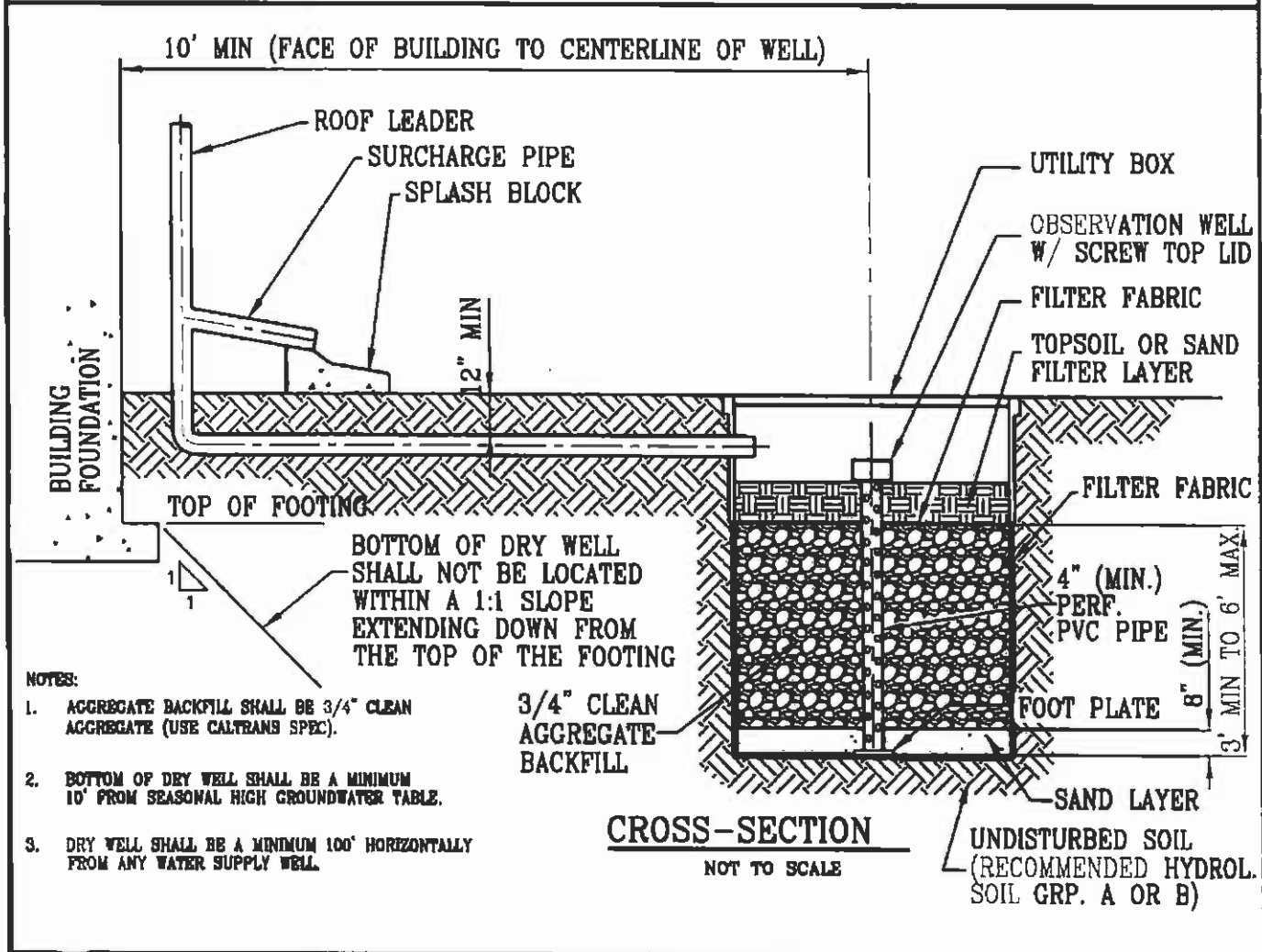
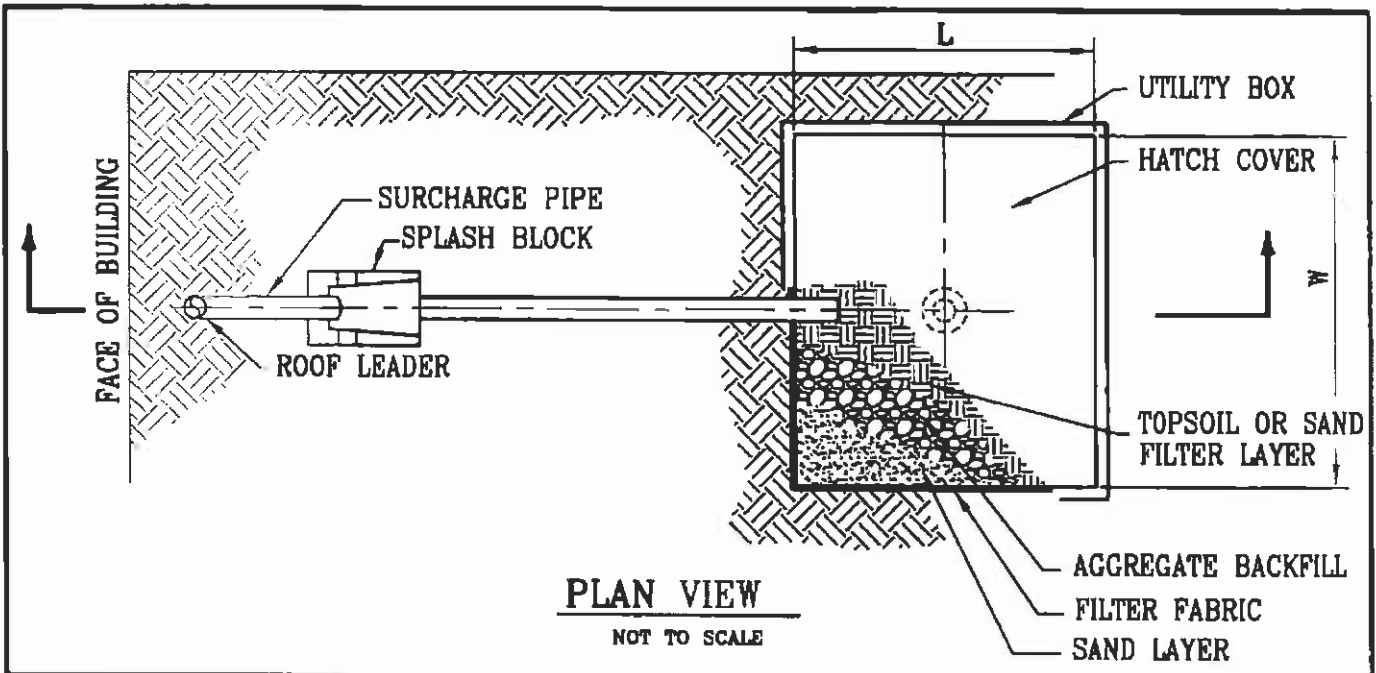
MON, SEP 08, 2008 07:55 A BJB C3-J Z:\CLAYTON STANDARDS\DWG\2008 UPDATES\C3\C3 REQUIREMENTS.DWG



NOTE:
L = DESIGN LENGTH BASED ON DESIGN INFILTRATION VOLUME AND 3/4" CLEAN AGGREGATE VOID VOLUME.

<p>CITY OF CLAYTON Founded 1857 ... Incorporated 1964</p>	INFILTRATION TRENCH DETAIL		SHEET 1 OF 1
	DATE: AUGUST, 2008	SCALE: NONE	PAGE
	APPROVED:	CITY ENGINEER	C3-3

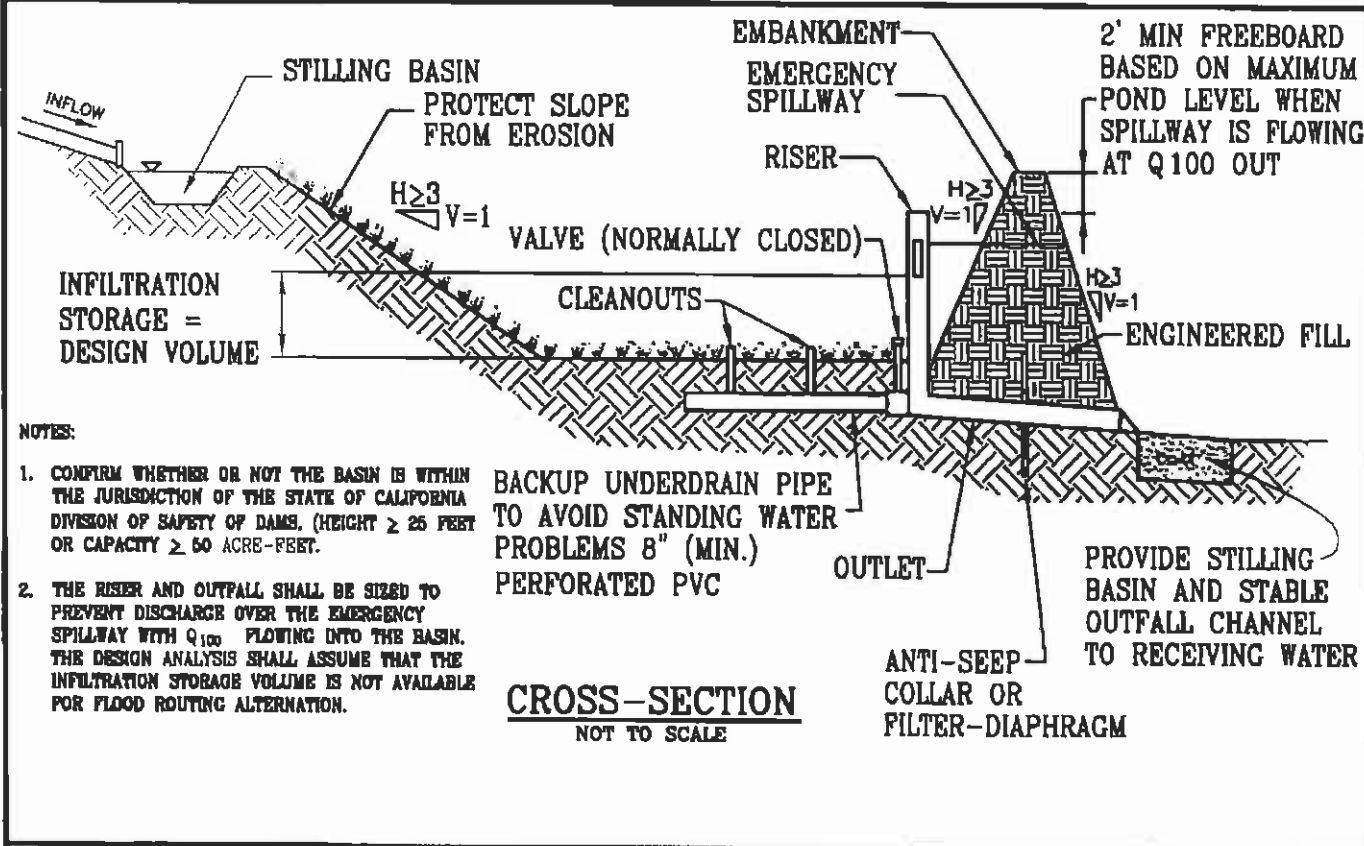
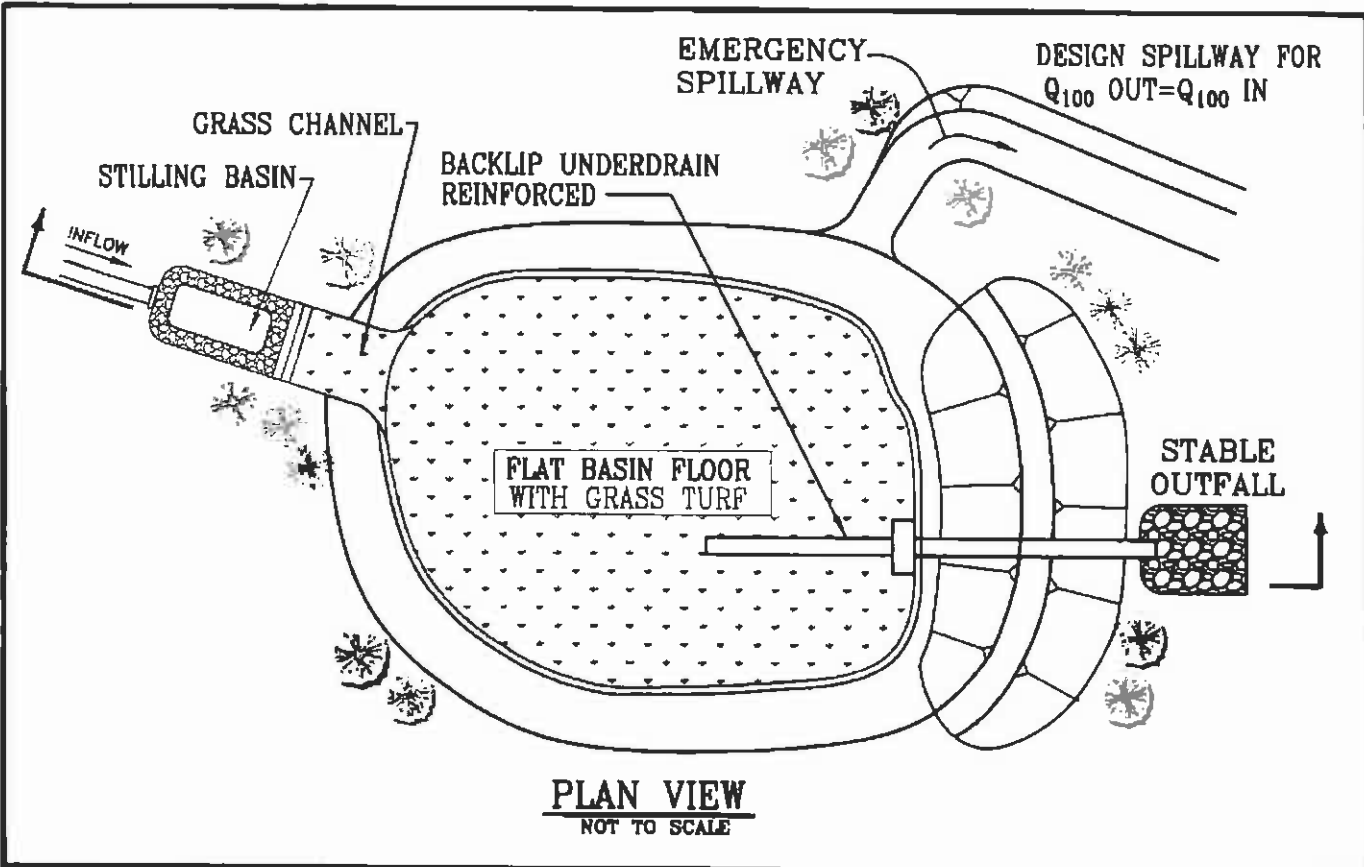
MON, SEP 08, 2008 07:55 A BJB C3-4 2:\CLAYTON STANDARDS\DWG\2008 UPDATES\C3\C3 REQUIREMENTS.DWG



- NOTES:**
1. AGGREGATE BACKFILL SHALL BE 3/4" CLEAN AGGREGATE (USE CALTRANS SPEC).
 2. BOTTOM OF DRY WELL SHALL BE A MINIMUM 10' FROM SEASONAL HIGH GROUNDWATER TABLE.
 3. DRY WELL SHALL BE A MINIMUM 100' HORIZONTALLY FROM ANY WATER SUPPLY WELL.

<p>CITY OF CLAYTON <i>Founded 1857 ... (Incorporated, 1964)</i></p>	DRYWELL DETAIL		SHEET 1 OF 1
	DATE: AUGUST, 2008	SCALE: NONE	PAGE
	APPROVED:	CITY ENGINEER	C3-4

MON, SEP 08, 2008 07:56 A B.B C3-5 Z:\CLAYTON STANDARDS\DWG\2008 UPDATES\C3\C3 REQUIREMENTS.DWG



NOTES:

1. CONFIRM WHETHER OR NOT THE BASIN IS WITHIN THE JURISDICTION OF THE STATE OF CALIFORNIA DIVISION OF SAFETY OF DAMS. (HEIGHT \geq 25 FEET OR CAPACITY \geq 50 ACRE-FT.)
2. THE RISER AND OUTFALL SHALL BE SIZED TO PREVENT DISCHARGE OVER THE EMERGENCY SPILLWAY WITH Q_{100} FLOWING INTO THE BASIN. THE DESIGN ANALYSIS SHALL ASSUME THAT THE INFILTRATION STORAGE VOLUME IS NOT AVAILABLE FOR FLOOD ROUTING ALTERNATION.

BACKUP UNDERDRAIN PIPE TO AVOID STANDING WATER PROBLEMS 8" (MIN.) PERFORATED PVC

ANTI-SEEP COLLAR OR FILTER-DIAPHRAGM

PROVIDE STILLING BASIN AND STABLE OUTFALL CHANNEL TO RECEIVING WATER

<p>CITY OF CLAYTON Founded 1857 ... Incorporated, 1964</p>	INFILTRATION BASIN DETAIL		SHEET 1 OF 1
	DATE: AUGUST, 2008	SCALE: NONE	PAGE
	APPROVED: CITY ENGINEER		C3-5